

Futuro Futuro

RANGE HOOD

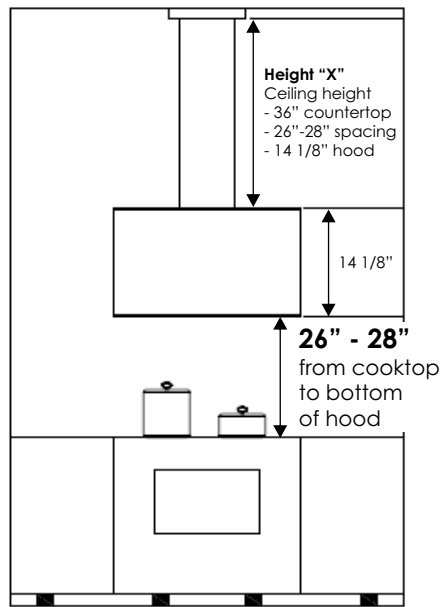
INSTALLATION MANUAL

MODEL: TACTIO ISLAND

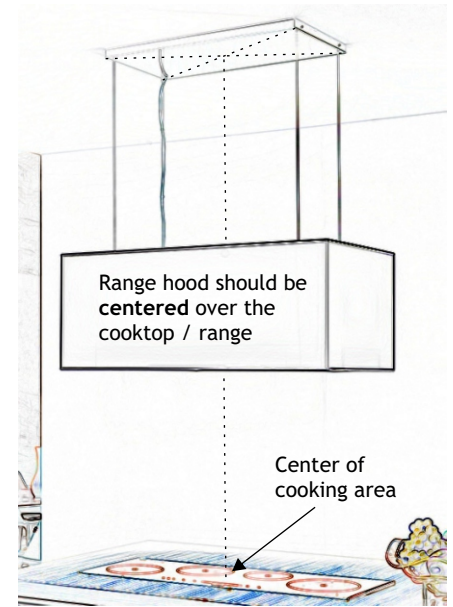
NOTE: PRIOR TO INSTALLATION

Please inspect range hood visually, as well as connect it to power supply and test its operation.

1 Recommended Installation Height

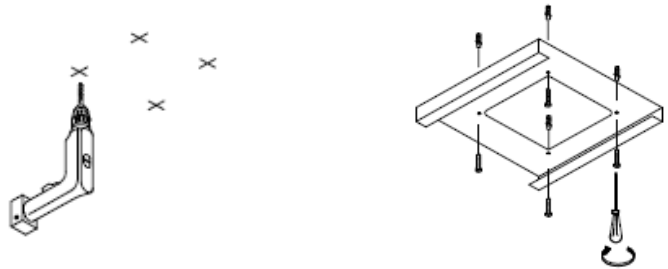
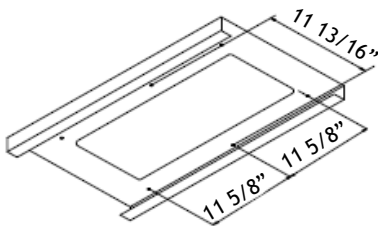


2 Recommended Positioning



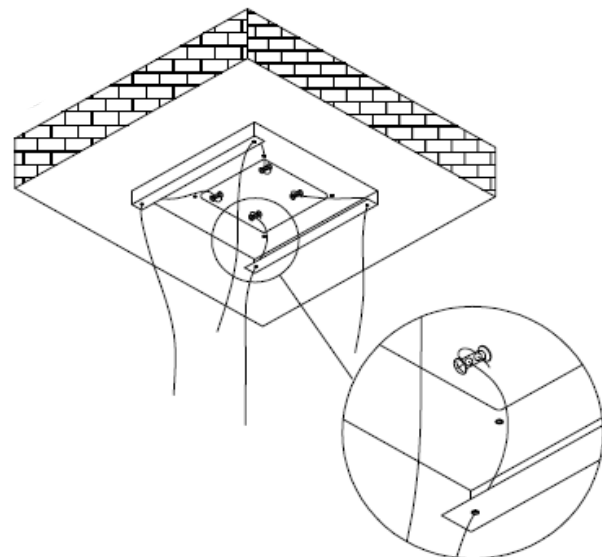
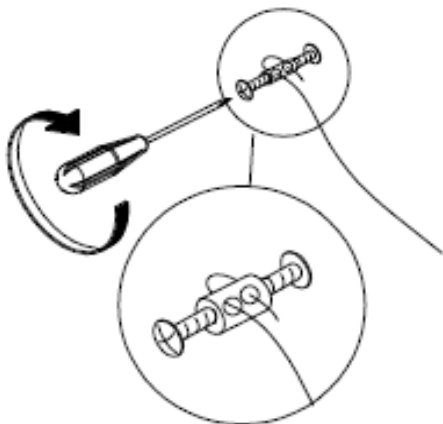
3 INSTALL CEILING PLATE

- 1.) Locate the centerline of the cooktop/range, and project it upward onto the ceiling.
 - 2.) Place the ceiling plate against the ceiling, centered over the cooktop/range, and mark location of holes.
- NOTE: 24" model has square plate with 4 holes, 36" model has rectangular plate with 6 holes.**
- 3.) Drill holes as necessary.
 - 4.) Secure ceiling plate to ceiling with screws (concrete/masonry ceilings: with anchors + screws).



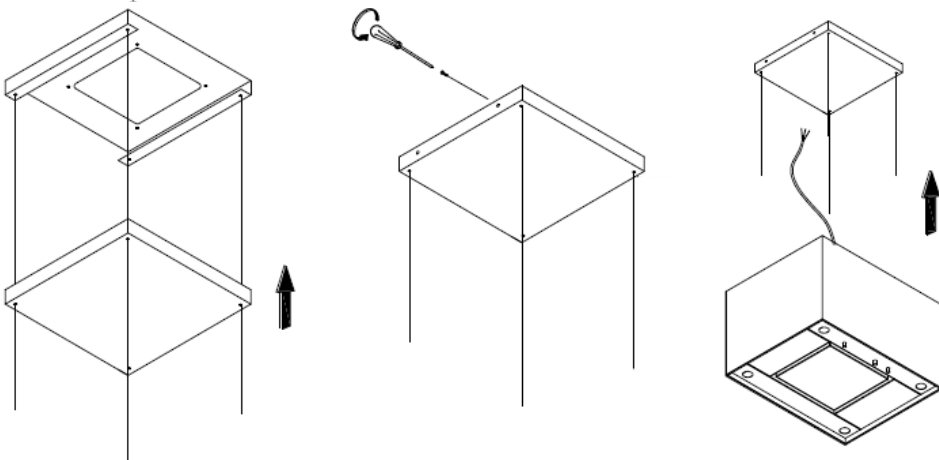
4 ATTACH SUPPORT WIRES

- 1.) Loop the supporting wire through the lock-nut, as shown.
 - 2.) Secure screw through the lock-nut (with the wire in it) into the ceiling, inside the inner cut-out of the ceiling plate.
 - 3.) Repeat Steps 1 & 2 for the other 3 wires.
 - 4.) Thread support wires through the 4 **horizontal** holes of the ceiling plate, as shown.
- NOTE: There are also vertical holes on the ceiling plate flanges - those are for mounting the trim cover, not for support wires.



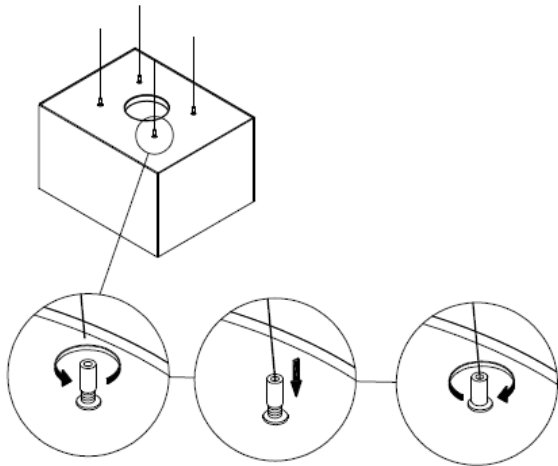
5 SITUATE THE TRIM PLATE

- 1.) Thread the support wires through the trim plate.
- 2.) Raise trim plate to the ceiling & temporarily secure it with 1-2 screws.
- 3.) Bring hood body to the support wires.



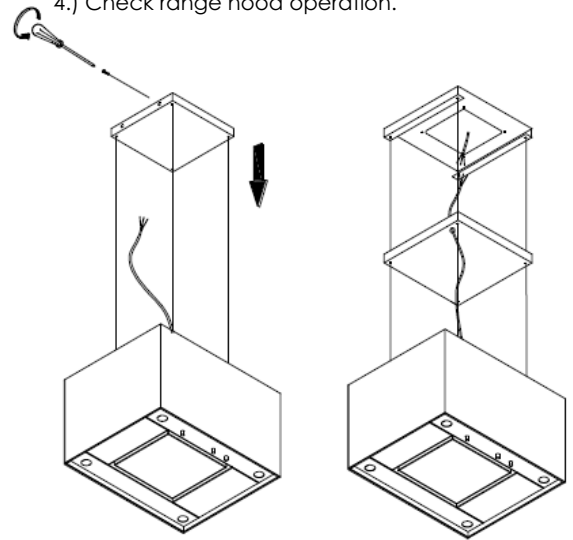
6 ATTACH HOOD BODY TO SUPPORT WIRES

- 1.) Loosen the lock-nuts located on top of the hood body.
- 2.) Bring the hood body to the recommended height (26" to 28" from bottom of hood to cooktop).
- 3.) Thread the support wire through the lock-nut & tighten the nut.
- 4.) Repeat for the other 3 support wires.
- 5.) Check that the hood body is level, adjust wires as necessary.



7 CONNECT POWER CORD

- 1.) Remove the screws holding the trim panel.
- 2.) Lower the trim panel and thread power cord through the pre-drilled hole.
- 3.) Connect power cord to power line, in accordance with local regulations.
- 4.) Check range hood operation.



8 SECURE TRIM PLATE

- 1.) Raise trim plate to ceiling plate.
- 2.) Secure with 4 screws.

