

# Futuro Futuro

just rangehoods



**EN**

USER & MAINTENANCE MANUAL

#### ATTENTION:

- Range hood must only be installed by a qualified technician, in accordance with the manufacturer's instructions and local laws and regulations.
- Manufacturer accepts no liability for damage to product or any other incidental damages, in case of improper installation or misuse.
- Please read these instructions carefully before beginning the installation.
- If you have any questions regarding installation, operation, or maintenance of the product, please visit <https://futurofuturo.com>.

#### WARNINGS:

- Range hood is supplied with a 3-pin, US/Canada standard, power plug, which must be connected to a dedicated line that provides 110 volts AC @ 60 Hz current. Maximum power consumption 3.5 amps.
- Do NOT cut power plug and attempt to connect range hood directly to wiring.
- Prior to cleaning, replacing light bulbs, or any other maintenance or service of the range hood, ensure that all power sources are turned off.
- Respect local legislation and regulations regarding the exhaust air when the suction is operating. Failure to respect and perform all the maintenance and cleaning operations described in this handbook could cause a fire hazard.

#### NOTE TO INSTALLER:

Electrical components, power connection, and any other non-user- serviceable parts of the range hood, remote blower kit (if present), and/or make-up air system (if present), should not be accessible to the user after installation, only to a technician, via removable access panels.

#### INSTALLATION GUIDELINES:

- The recommended distance between the bottom of the hood and the cooking surface is: 26" - 30".
- Installing the range hood at a higher distance will result in decreased capture performance, and is not recommended.
- Range hood must be securely attached to a load-bearing element, such as a joist, stud, plywood backing, or soffit box. Range hoods should not be attached to sheetrock or false ceiling alone, even with molly/toggle bolts. The manufacturer accepts no responsibility for damage, either to the range hood or to the kitchen environment, or any injury, due to improperly secured range hoods.

#### COMPATIBLE COOKING EQUIPMENT :

The range hood is designed for use with all types & brands of residential (NOT commercial), indoor, standard cooking equipment, including: ranges, cooktops, and ovens, that use any combination of gas, electric, and induction heating. It is not designed for commercial operation or grilling.

#### RISK OF FIRE:

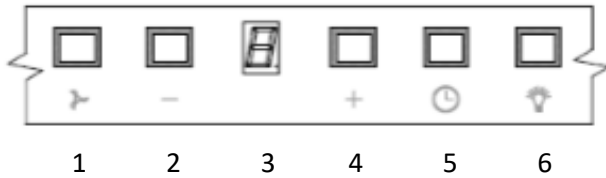
The grease filters should be regularly cleaned in the dishwasher to prevent excessive accumulation of grease. Do not clean grease filters by hand, to avoid damaging the filtration mesh. The surface of the range hood itself should also be regularly cleaned to prevent grease build-up. Do not leave cooking equipment unattended while cooking, as overheated pans may catch fire. Do not flambe or grill under the range hood.

#### MISCELLANEOUS WARNINGS:

Do not stare directly into operating lights of the range hood (as well as any other household light sources). It is recommended to use the ventilation equipment every time cooking is performed, to avoid heat congestion.

## CONTROLS & OPERATION

### DIGITAL / TOUCH CONTROLS (5 SENSORS + DISPLAY)



1. BLOWER ON/OFF - this sensor turns the hood blower ("fan") on at 2n speed, and off.

2. SPEED DECREASE - decreases the blower speed.

3. DISPLAY - shows the current speed.

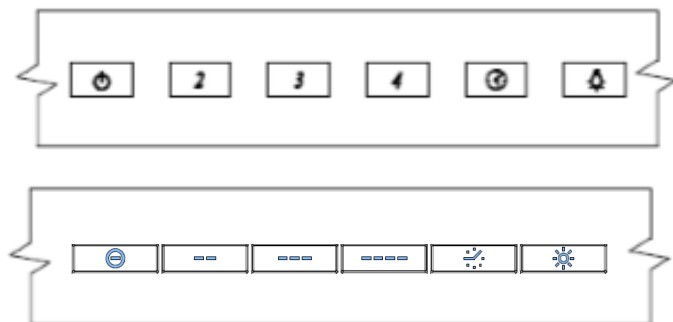
Filter Cleaning Reminder Feature: after 100 hours of operation, a "0" (zero) or letter "A" will flash on the display, indicating that the metal grease filters should be cleaned (in the dishwasher). After cleaning the filters: turn off the hood, and reset the 100-hour timer by pressing the TIMER button (clock icon) for 3 seconds. The "-" (dash) symbol will appear on the display to indicate that the timer has been reset.

4. SPEED INCREASE - increases the blower speed. When maximum speed is reached, the number on the display will flash, and after 5 minutes the speed will be automatically lowered.

5. TIMER - Delayed Shut-Off Feature: pressing this button while the hood is operational, will activate a 10-minute timer, after which the hood will shut off automatically. This is a convenient way to clean up the remaining odors when you're finished cooking, without having to return to the hood and shut it off manually.

6. LIGHTS - turns the lights on and off.

## SOFT TOUCH CONTROLS WITH BACKLIGHT:



1      2      3      4      5      6

1. BLOWER ON/OFF - this button turns the hood blower ("fan") on at 1st speed, and off.
2. 2ND SPEED - changes blower speed to 2nd.
3. 3RD SPEED - changes blower speed to 3rd.
4. 4TH SPEED - changes blower speed to 4th (maximum). At this speed, the backlight will flash, and after 5 minutes the speed will be automatically lowered to 2nd speed.
5. TIMER - Delayed Shut-Off Feature: pressing this button while the hood is operational, will activate a 10-minute timer, after which the hood will shut off automatically. This is a convenient way to clean up the remaining odors when you're finished cooking, without having to return to the hood and shut it off manually.
6. LIGHTS - turns the lights on and off.

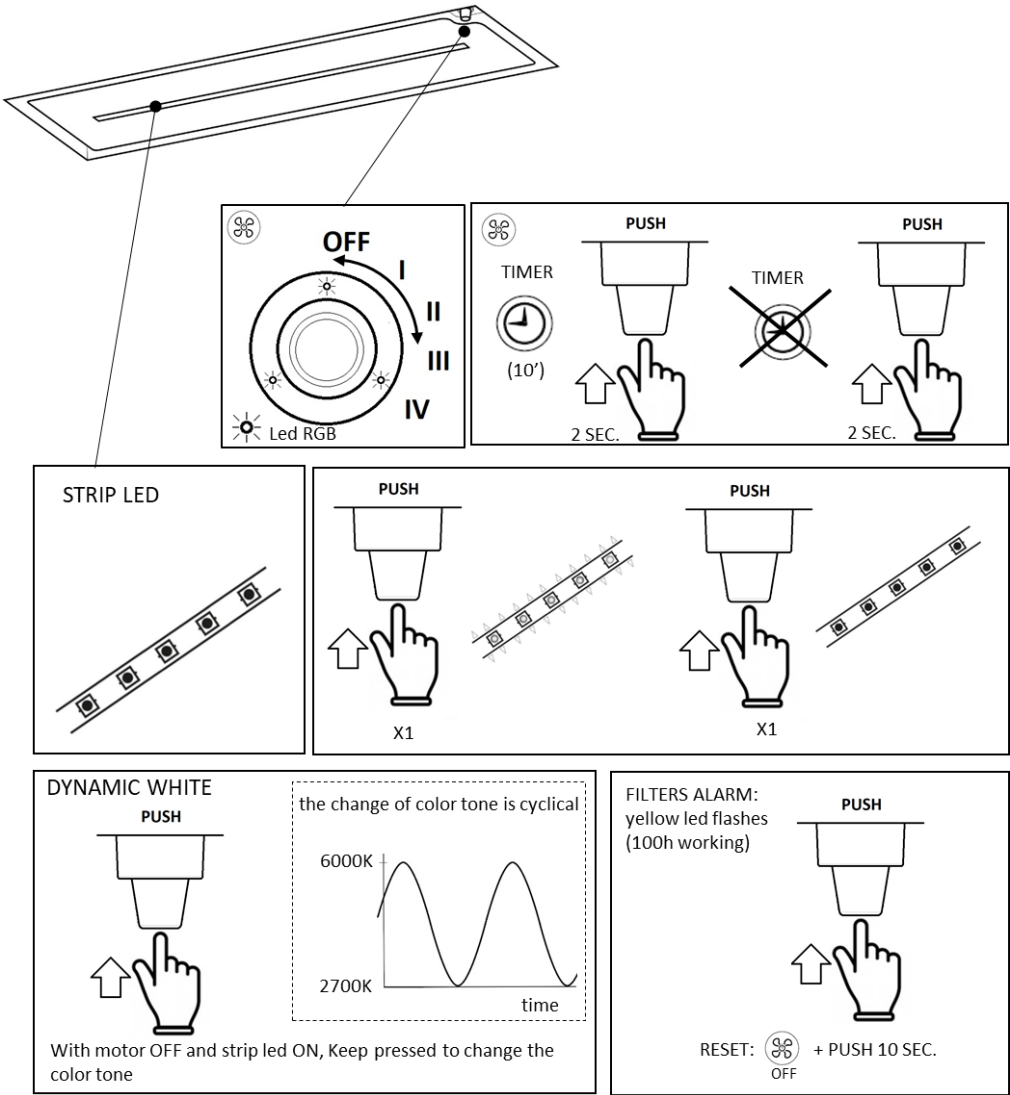
## SOFT-TOUCH CONTROLS:



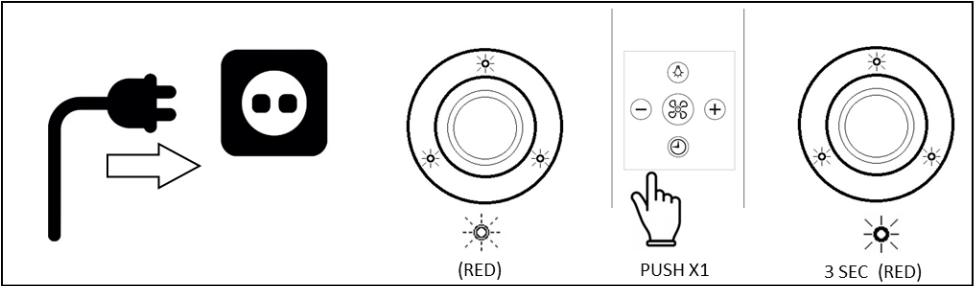
This control panel version features 4 “soft-touch” buttons, and a variable-color LED (red & green).

1. LIGHTS ON/OFF - turns the lights on and off.
2. SPEED DECREASE - decreases the blower speed.
3. SPEED INCREASE - increases the blower speed. At 4th speed maximum), the LED flashes quickly, and after 5 minutes, the hood will automatically reduce the blower to the 2nd speed.
4. BLOWER ON/OFF + DELAYED SHUT-OFF - turns on the blower (at 2nd speed). Pressing this button for 3 seconds activates the “Delayed Shut-Off” function, which will automatically turn off the hood after 10 minutes. When this function is activated, the LED will flash slowly.
5. STATUS LED

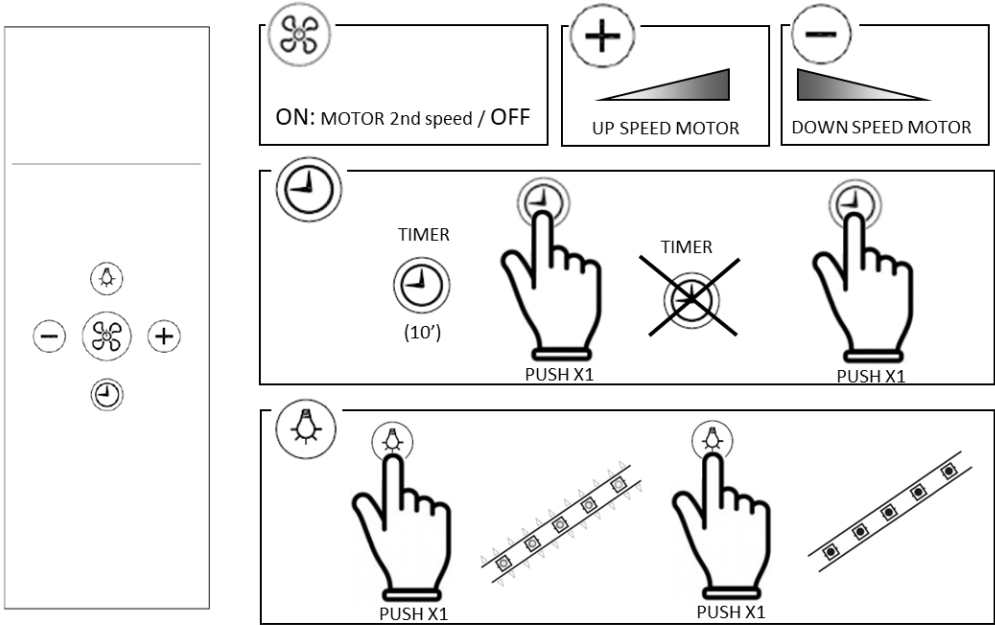
ROTARY CONTROL:



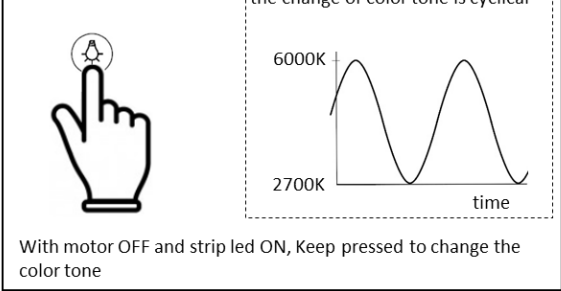
OPTIONAL: remote control learning process



CONNECT THE HOOD TO THE POWER SUPPLY	red LED flashes (learning process)	Presser any button within 1'	Learning process OK, red LED will be on continuously for 3sec
--------------------------------------	------------------------------------	------------------------------	---

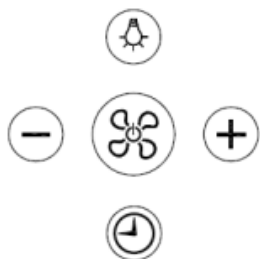


DYNAMIC WHITE





## REMOTE CONTROL:



- 1 (top) - LIGHTS ON/OFF - turns the lights on and off.
- 2 (left) - SPEED DECREASE - lowers the blower speed.
- 3 (center) - BLOWER ON/OFF - turns on the blower at 2nd speed / turns off the blower.
- 4 (right) - SPEED INCREASE - increases the blower speed. At 4th speed (maximum), the LED will flash, and after 5 minutes, the hood will automatically decrease to 2nd speed.
- 5 (bottom) - TIMER - Delayed Shut-Off Function: pressing this button will activate a 10-minute timer, after which the hood will automatically shut off.

## REMOTE CONTROL LEARNING MODE ("PAIRING"):

Range hood models equipped with a remote control are already configured.

Models for which an optional remote control was purchased, need to have the remote set up at the 1st use.

To set up the remote:

1. DIGITAL / TOUCH / SOFT TOUCH CONTROLS: With the range hood turned OFF, press and HOLD the "+" button for 5 seconds.  
SOFT TOUCH CONTROLS WITH BACKLIGHT: With the range hood turned OFF, press and HOLD the "4" button for 5 seconds.
2. The LED or backlight (depending on model) will start flashing. This indicates that the hood is in "Remote Learning Mode".
3. Press any button on the remote control.
4. LED or backlight will change from flashing to continuously lit for 3 seconds, then turn off.
5. Confirm that the remote has been "paired" with the range hood by using its controls. If the range hood does not respond, turn it off and repeat the learning procedure. If the procedure fails, replace the battery/batteries in the remote control with fresh ones, and try it again.

## DUCTED VS DUCTLESS INSTALLATION

Unless otherwise specified, any Futuro Futuro range hood can be installed in ducted or ductless (“recirculating”) mode. In ducted mode, a duct conveys the air to the outside; in ductless mode, additional filtering cartridges clean the air before it’s released back into the kitchen. There are specific instructions for both modes - please read them carefully.

### DUCTLESS INSTALLATION:

Recirculating filtering cartridges must be replaced according to the instructions specific to the range hood model and/or type of cartridges. Failure to replace filtering cartridges may lead to severely reduced airflow, decreased range hood performance, and eventual damage of the range hood internal components.

### DUCTED INSTALLATION:

- Installation must be performed in accordance with local building code requirements and/or regulations.
- It is strongly recommended that the duct used is the rigid type (NOT flexible type), in order to ensure smooth airflow, less noise, higher performance, and long-term reliability.
- For duct dimensions, such as diameter and maximum length, please refer to the instructions of the specific range hood model.
- Do not connect the range hood to ducting used by other appliances, heating or cooling equipment. The range hood duct must be its own, separate line.
- Duct must lead to the outside of the house. Do NOT vent into enclosed spaces such as attics.
- Duct must be terminated by a duct cap or cover that conforms to the local building codes and regulations. It is strongly recommended that the cap includes a “damper” (airflow controller, backdraft damper, etc) to prevent cold air from blowing back inside.

## **CARE & MAINTENANCE**

Before cleaning or maintenance, disconnect the power to the range hood. These general instructions apply to the vast majority of range hoods. Certain specific models may include additional cleaning or operating instructions, as detailed in their model-specific manual.

### **CLEANING RANGE HOOD BODY:**

Stainless-steel range hoods should be cleaned with a non-abrasive cleaner, such as WD-40. Models that feature enamel finish, or glass surfaces, should be cleaned with a non-abrasive glass cleaner, or a warm moist dish cloth. Do not use abrasive substances, such as stainless steel polishes, cleaning powders, scrubbing sponges, or steel wool.

### **CONDENSATION:**

It's generally recommended to turn on the range hood a few minutes before cooking, in order to establish airflow and prevent condensation from the hot steam hitting the cold surface of the range hood. It's also recommended to use the Delayed Shut-Off feature (10-minute timer), so that any moist air remaining in the hood or ductwork is completely expelled.

Another cause for condensation could be improper duct size or blockage. If condensation occurs regularly, or if you feel air coming out of the range hood (backdraft), definitely check the ductwork to ensure it's at least the same or larger diameter as the blower output, not blocked, and that the backdraft / louvers on the end-cap is opening easily.

## **LIGHTS REPLACEMENT**

### **LED LIGHTING:**

Under normal operating conditions, LED lights generally don't require replacement. However, in the rare that an LED light fixture needs to be replaced, the replacement should be conducted only by a technician using original replacement parts.

## HALOGEN LIGHTING:

range hoods equipped with halogen lights may need occasional light bulb replacement. Follow the replacement procedures in the model-specific manual for directions. Remember to never touch halogen bulbs (of any type, anywhere) with bare hands, since this will significantly shorten the life of the halogen bulb.

## INCANDESCENT & FLUORESCENT LIGHTING:

range hoods equipped with incandescent or fluorescent lighting will also need occasional light bulb replacement - please follow the instructions in the model-specific manual.

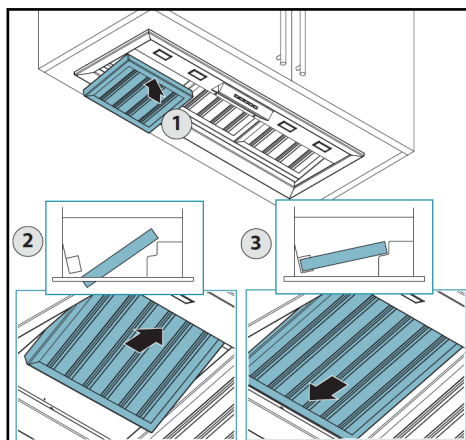
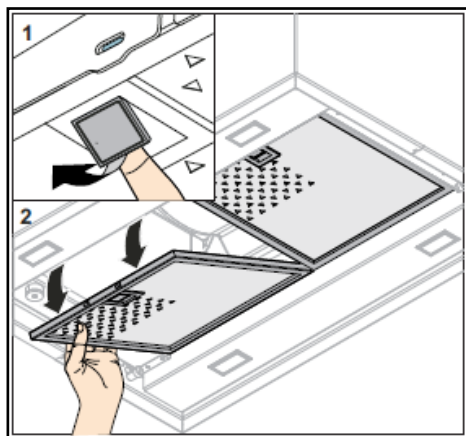
## FILTERS MAINTENANCE

### METAL GREASE FILTERS:

All Futuro Futuro range hoods are equipped with dishwasher-safe metal grease filters. The filters should be cleaned on a regular basis, to avoid a heavy buildup of grease. Do not clean the filters by hand, since that may damage or crumple the metal mesh.

To remove the metal filters - support the filter with 1 hand, and press / pull the locking latch with the other. To reinstall the filter: align the rear tabs with the holes in the hood frame/holder, press/pull the latch to retract the front tab, insert the filter, and ensure it's securely in place.

Many of our range hood models include a feature called "Filter Cleaning Reminder", which will activate a light on the control panel after a certain time, to remind you to clean the filters.



## CHARCOAL FILTERS (DUCTLESS INSTALLATIONS):

If the range hood is not ducted to the outside, then charcoal filters should be used, in addition to the metal filters. The activated charcoal particles trap odors, before the air is released back into the kitchen.

Regular charcoal filters are NOT washable, they must be replaced periodically. The replacement frequency depends on your cooking style and frequency. You can tell that the filters are saturated when the hood no longer absorbs odors. Replacement filters are available in the “Accessories” sections of our website.

Long-Life / Rechargeable charcoal filters can be cleaned & reactivated. To do so, place the filter in the dishwasher, by itself (to avoid having random food particles getting trapped in the filter), and wash it on the highest temperature using regular dishwasher detergent/pod/pac. After washing, place the filter in the oven at 220 degrees for 10 minutes. Note that even with washing and recharging, eventually the filter will stop absorbing odors, and would need to be replaced.

## OTHER FILTER TYPES:

Some models are equipped with additional filtration cartridges and/or modules. Please follow the instructions in the model-specific manual for guidelines on recharging or replacing those cartridges.

## WARRANTY

All Futuro Futuro products are covered by a US/Canada standard warranty (1 year parts & labor).

For any questions or concerns, including repair requests, please contact us via <https://futurofuturo.com>.

